

ERASMUS STUDENT GUIDE

CONTENTS

Erasmus is a feeling

The Quasar Institute for Advanced
Design

Where we are

Where you will be

The Structure

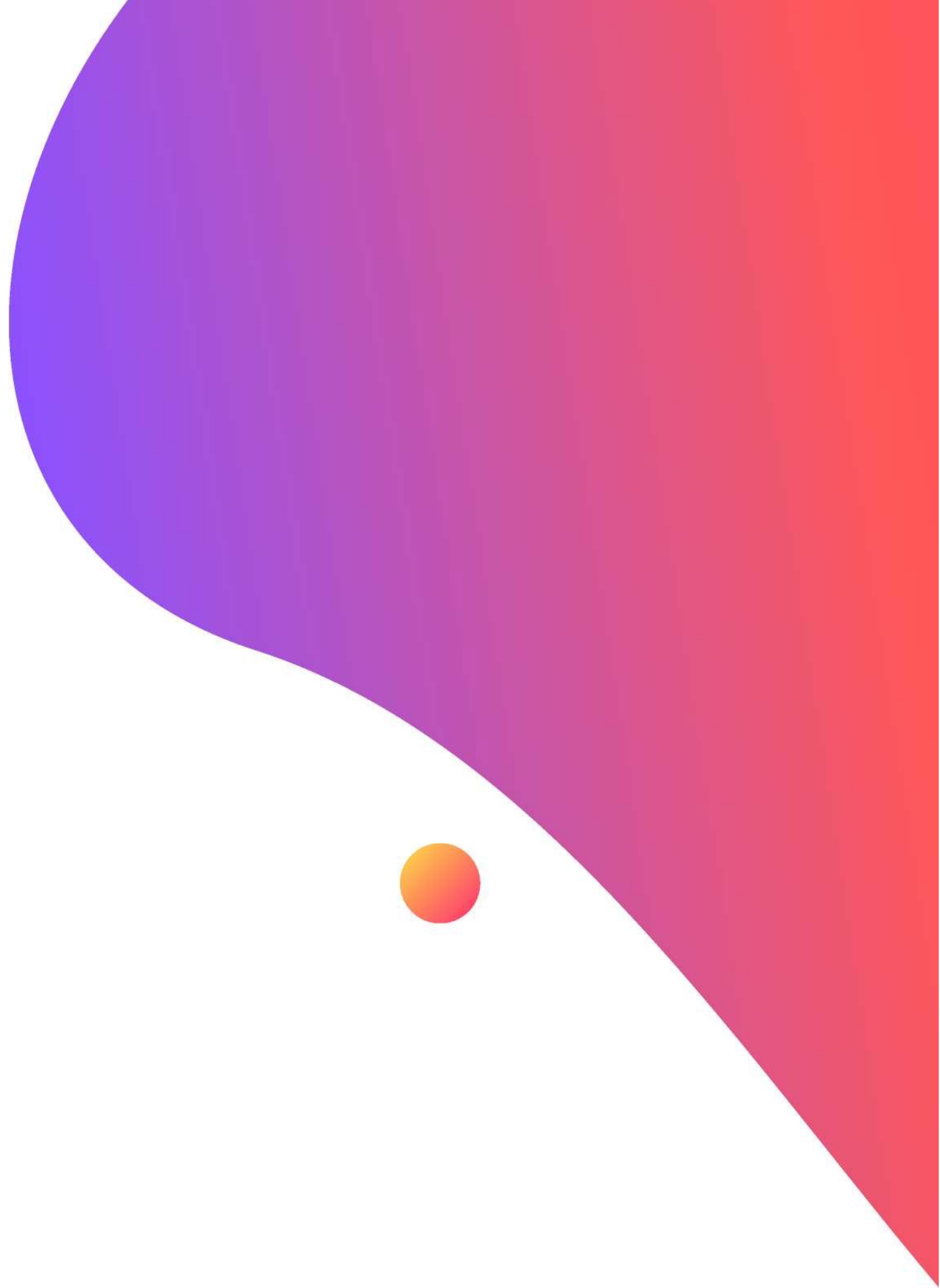
The Facilities

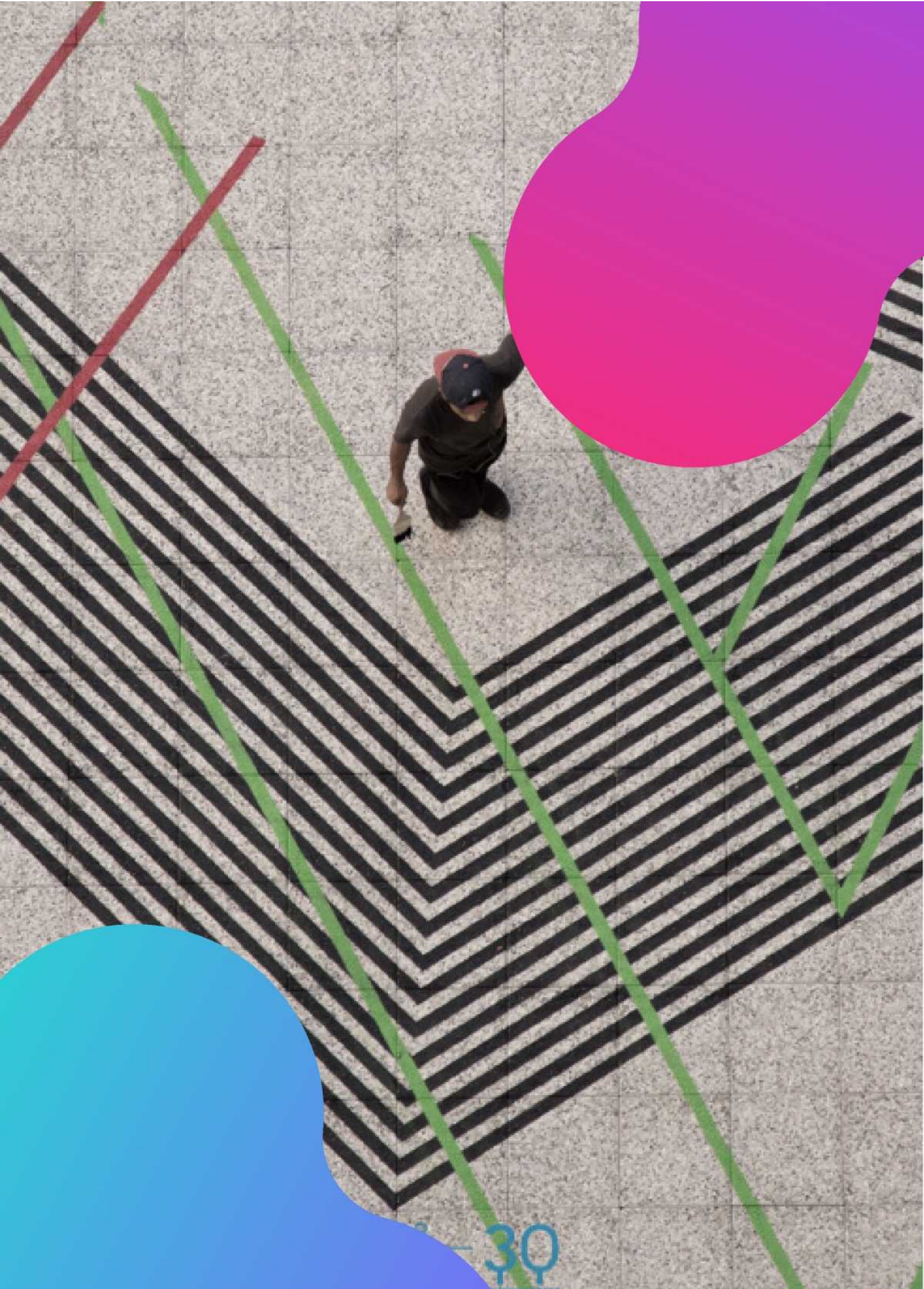
The Courses

Erasmus+

The Erasmus Office Your Experience

Contacts

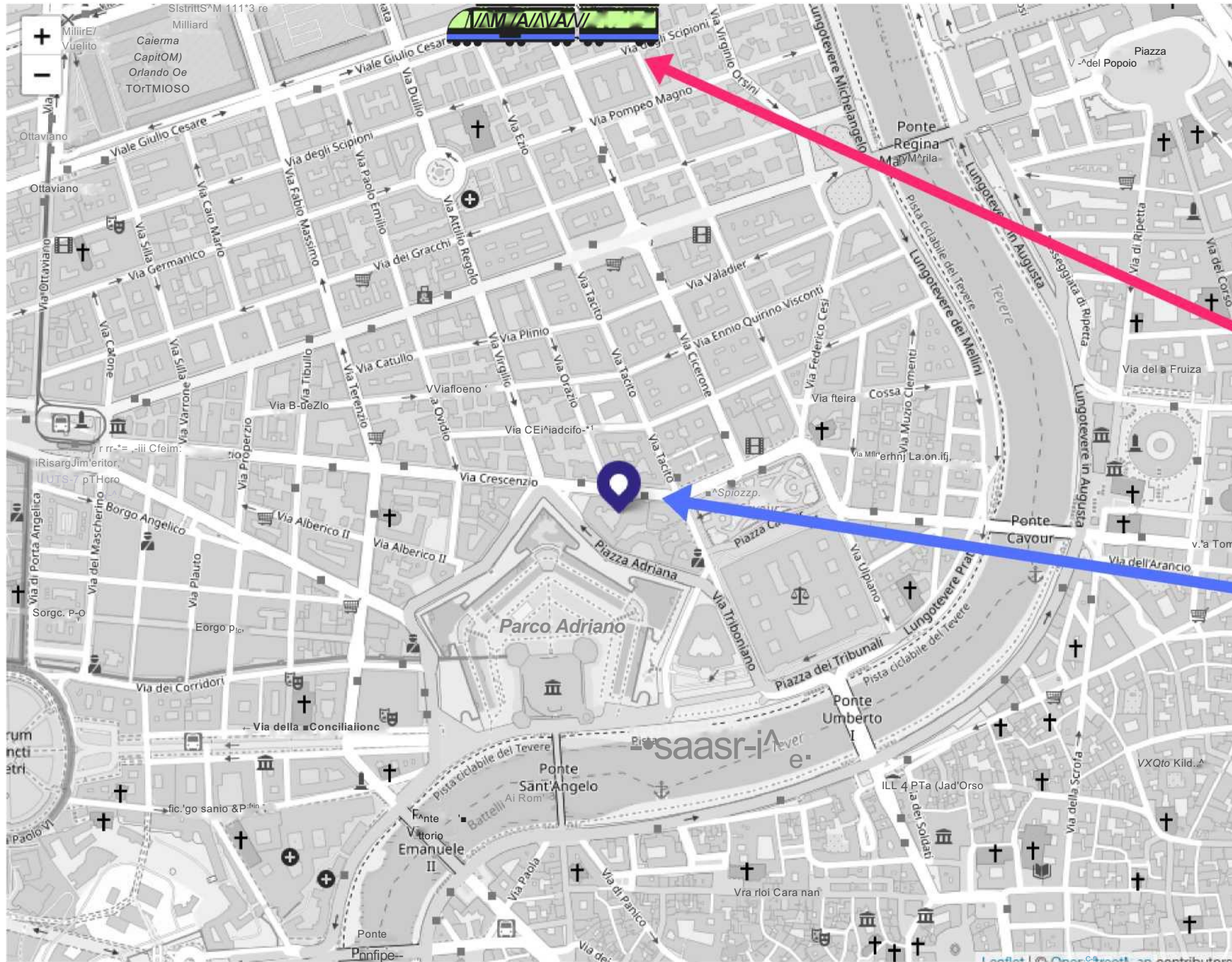




QIAD

Who we are

Quasar Institute for Advanced Design is the first Exponential Learning™ Centre, where new creatives meet the best production experience, to shape together the design of the future. Quasar Institute for Advanced Design, founded in 1987, is a higher education centre that aims to train you in the new professions of design and visual and multimedia communication.



Where we are

- closest metro station: Lepanto line A (RED)
- address: Via Crescenzo 17A, 00193, Rome, Italy
- from city center: 0



Where you will be...

- Castel Sant'Angelo, 5 minutes walking distance
- Spanish steps, 15 minutes
- San Pietro, 10 minutes

FACILITIES

Q-Card	Housing
The Q-Card	Hundreds of
introduces you to all	accommodation
community benefits	solutions with
afforded to QIAD	discounts for our
students	students



Eat & Drink

You will stay in the city center, surrounded by hundreds of restaurants & cafes

Green

We are 10 mins walking distance from Villa Borghese, the green heart of Rome & 5 mins from the main river

UNDERGRADUATE COURSES



Interaction Design

[Click](#)



Habitat
Design

[Click](#)



Graphic & Communication
Design

[Click](#)



ERASMUS+

What is Erasmus+ ?

Erasmus+ is the EU's programme to support education, training, youth and sport in Europe. Its budget of €14.7 billion will provide opportunities for over 4 million Europeans to study, train, and gain experience abroad. Set to last until 2020, Erasmus+ doesn't just have opportunities for students. Merging seven prior programmes, it has opportunities for a wide variety of individuals and organisations.





CONTACT US

Erasmus Office

Via Crescenzo 17A, first floor

Office hours

Tuesday, Wednesday, Thursday from 12:00
to 13:30

E-mail Address

erasmus@quasarinstitute.it



The image features a white background with decorative elements in the corners. In the top right, there is a large, irregular shape with a purple-to-pink gradient, and a smaller solid purple circle below it. In the bottom left, there is a large, irregular shape with a pink-to-purple gradient.

WELCOME TO QIAD

Erasmus¹ borders

When I started my Erasmus, I could not find borders anymore. Geographical borders foil down in the deep sea of diversity and uniqueness, stereotypes crash against the joy's waterfall that shines for the entire day, in any Erasmus city.

Erasmus' light shows the best of the ones who decide to embrace, to receive; to give, to share. Every time borders fade in the sunrise fog, a new hope is born, a new opportunity is ready to be taken.

QUASAR

INSTITUTE FOR
ADVANCED DESIGN